

# COMPANY PROFILE







# Contents

- 1 About JCCL (Introduction)
  - 1.1. Vision
  - 1.2. Mission
  - 1.3. Our Values
  - 1.4. Business approach
- 2 History and Philosophy
- 3 Company Information
- 4 Our Organisation Structure
- 5 Environment, Health and Safety
- 6 Projects Reference
- 7 Resources and Our reliable Service providers
- 8 Corporate Social Responsibilities





## 1. About us

Junior Construction Company Limited (JCCL), is a sister company of Nchambis Transporters Limited that has a long history in bus and cargo transportation since 1969. In 2004, JCCL commenced its operation in Shinyanga, Tanzania and later on shifted to Dar es Salaam. Since then it has evolved to being a diversified civil and building construction, infrastructure (roads) concessions and mining services company with an established and growing local and international client base engaged in resources, energy and infrastructure delivery.



Our business approach is summarised in its positioning statement of **"Structured Creativity"**. For JCCL **"Structured"** articulates our ability to deliver products and services according to a clients desire, through tested methodology and technology while **"Creativity"** reflects our spirit of meeting challenges with innovative solutions.

### 1.1. VISION

To be the world's most respected and attractive company in construction services, by creating value for our stakeholders..

### 1.2. MISSION

We endeavor at all times to provide a comprehensive service to our clients. We strive to complete projects timely and within budget. We promote strict adherence to quality, health and safety standards and we adhere to labor equity and encourage harmonious personnel relationships in order to promote team work among staff.

### 1.3. OUR VALUE

- Production with Safety.
- Employing Current technology in all our projects
- People are the business, and our business is people.
- No Compromise to quantity and quality of work.
- Community wellbeing for us having been there.
- Environment protection.
- We embrace cultural, Social, and religious diversity.

### 1.4. OUR BUSINESS APPROACH

What drives our business? At JCCL we rely on the demand for engineering and construction works. We have a clear strategy of using our collective skills and understanding of markets to develop a unique value proposition to clients. To us our clients are leaders in their fields by delivering effective and efficient construction services through our relationship based approach with our clients.

JCCL businesses are supported by an integrated quality management system that underpins every aspect of its operations. We operate a fleet of Construction Machinery like, Hydraulic Excavators, Articulated Dump Trucks, Dump trucks, Graders, Water and Fuel Boozers, Wheel Loaders, Compactors, Patrol Pickups, drilling machine, light towers, Generators and bull dozers operating as well as many more to be acquired to accommodate the ever growing market and as per clients' demands.





## 2. History and Philosophy

As noted early Junior Construction Company Limited (JCCL) began its construction business in 2004, Shinyanga, and later on resided its headquarters in Dar es Salaam. The company acquired full registration in July, 2008. Since then, JCCL has undertaken many challenging projects and accumulated skills and experience in design and road construction/rehabilitation solutions, mining project services as well as engineering related works.

To date, JCCL takes on the role of main contractor for small to medium size projects and perform dam construction. We also provide machinery and mining equipment rentals as value-added services to our clients.

### OUR OBJECTIVE

Our objective is to provide our clients with best quality final product that's why we call **"Quality Producers"**. Our emphasis is on clear communication and a follow-through procedure ensures that client's objectives are top priority in the planning and execution of all our processes by including **"Safety First"**

Our Project management and execution philosophy is:

- Create detail schedule and resources plan to meet client's project objective
- Communicate clearly with all project stakeholders
- Track project progress and fine-tune deviations
- Professional and closely supervision on best quality of work done
- Advise our clients on cost minimisation while uplifting job quality
- Complete the project timely.

We endlessly take pride on our quality and timely delivery, thus our clients can always be assured that only the most experienced and qualified people are serving them, all time.





### 3. Company Information

**Registration Date** 27<sup>th</sup> July, 2008

**Physical Address** 41, Kipawa Industrial Area  
P.O. Box 80488  
**DAR ES SALAAM**, Tanzania  
Tel: +255 767444148  
Email: [info@junior.co.tz](mailto:info@junior.co.tz)  
Website: [www.junior.co.tz](http://www.junior.co.tz)



**Principal Activities**

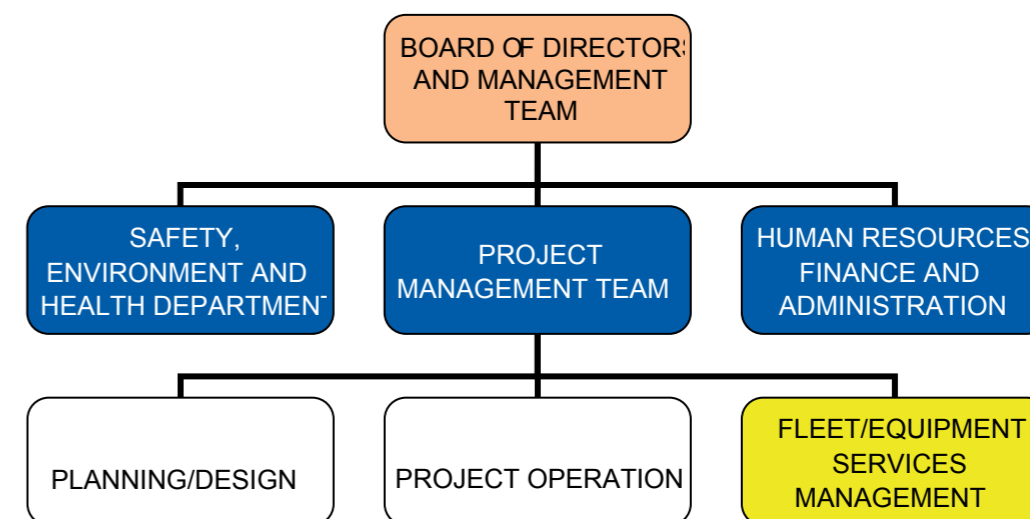
JUNIOR CONSTRUCTION COMPANY LIMITED			
Building	Housing	Civil Engineering	Project
Design to build and construction of large buildings and human settlements.		Construction of large, small structures in public and private infrastructure, including heavy civil structures, roads, and pipelines	Multi-disciplinary mining construction covering structural, mechanical, electrical and piping
Real estate and related infrastructure in public and private sectors		All sectors	Predominantly mining, industrial and power in public and private sectors

**Capital and Share Owning**

Authorized share capital	10,000,000,000	
Called up share capital	10,000,000,000	
Advance towards share capital	10,000,000,000	
Paid up share capital	10,000,000,000	
Owner	%average - shares	Role
S.M. Suleiman	80%	CEO and Board Member
Y.M Suleiman	20%	Director

**Total Staff Strength** 126 (as of January, 2016)

### OUR ORGANISATIONAL STRUCTURE



### OUR MANAGEMENT TEAM

The business is driven by professionally qualified working board of Directors; collectively they accumulate more than 20 years of work experience in Construction and civil engineering. The board of Directors are involved in the business development, Safety, Project management and administration of the company. The Management also proactively gather feedback, identifies changes in the business environment, reviews work processes and communicates key learning points and company policy to all staff at regular meetings.

### OUR STAFF/PEOPLE

JCCL invests in people as human capital because it is our sincere believe that our people are crucial in delivery of services and solutions to our clients. Over 120 employees of JCCL have been equipped with the right skills, knowledge and attitude through a comprehensive training programme that constantly upgrades our people in technical and management skills.







## 4. Environmental, health and safety

JCCL safety, health and environment (EHS) policy and practices centre around a zero-harm philosophy towards people, host communities and the environment. Our operations outside Tanzania are governed by international standards, we consistently enforce a standard approach to Safety Health and Environment and does not compromise our standards of conduct when operating in other countries.

The company's slogan "Safety First" programme is a non-negotiable minimum standard for all operational businesses and is driven at all levels throughout.

## Safety actions and trainings

### A) SAFETY

Our entire workforces are well trained in Operational Safety, Fire safety, Accident handling, Fuel spillage, and other emergencies. We continuously conduct safety trainings on daily basis to our employees based on altered topics and issues just as with existing National Safety Regulations as spelled out by the Government and/or other concerned authorities.



### B) HEALTH

Our Occupational Health & Safety unit provides support in all aspects of health and safety relating to field and administrative operations. We are committed to ensuring the health and wellbeing of the public, the environment and all Junior Construction Company's employees, subcontractors and suppliers.



### C) ENVIRONMENT

We promote energy efficiency by ensuring that our equipment fleet is well maintained and replaced on a regular basis.

## 5. Projects Reference

We are so proud of our team; the Operators & Drivers are trained by internationally credited trainers in safety and defensive driving. Likewise, upon hiring of vehicles from other companies, the same trainings are undertaken for the hired Operators & Drivers to meet our standards. Operators & Drivers of the hired Machinery & Vehicles are always under the direct control and authority of our management team.

<b>Client:</b>	Stamigold Biharamulo Mine
<b>Location:</b>	Biharamulo, Tulawaka Project
<b>Date:</b>	2015/2017
<b>Sector:</b>	Mining
<b>Delivery Method:</b>	Main Mining Contractor - Responsible for Project Management, Development, construction, equipment provision
<b>Form of Payment Delivery:</b>	BCM, Hourly.
<b>Project Highlights:</b>	
Construction and provision of hiring Mine Equipment and Operations	
<ul style="list-style-type: none"> <li>The full construction of the tunnel includes the removal of 2.1 million cubic meters of rock and fill and the placement of a concrete tunnel lining totalling 8,700,000 cubic meters of concrete.</li> <li>Upgrade in excavating of open pit floors, sumps and drainage channels, drilling of holes for production blasting, ore supply to the mills (plant), establish and maintain of new and old infrastructure, road rehabilitation grading, pit dewatering, truck hauling (ores and waste), dozing, and assist in designing.</li> <li>Fuel Supply to the mine, expatriates such as mine engineers, workshop technical experts and Safety personnel.</li> <li>Maintenance of haul roads, ramp and onsite access roads, Dust suppression/control, re-handling of ore from interim stockpiles and clearing and grubbing.</li> </ul>	
<b>Operations Equipment/Fleet:</b> 12 with 40/45 Tones ADT, 4 Excavators (374F, 336D, 345D, 320D), 2 Dozers (D8K), 1 Grader (140H), 2 Drill Rigs(T35), 4 Mine Light Plants, 2 Water Boozers (Scania 124C/FAW 380HP), 1 Fuel Truck (FAW 380HP-14,000 Litres), 4 Light Vehicles (LVs) Land Cruisers-78 Series), 2 Low beds (36/56 Tons) and 1 Wheel Loader, 5.6).	
<b>Agencies Involved:</b> Ministry of Energy and Minerals – Department of Minerals	



I. STAMIGOLD COMPANY LIMITED





## II. TANZANIA ROADS AGENCY (TANROADS)

<b>Client:</b>	Tanzania Roads Agency
<b>Location:</b>	Tabora, Shinyanga and Simiyu
<b>Date:</b>	2004 - 2016
<b>Sector:</b>	Building, Civil Construction
<b>Delivery Method:</b>	Major Contractor – Project rehabilitation, road and bridge construction, equipment provision
<b>Form of Payment Delivery:</b>	Contractual
<b>Project Highlights:</b>	
<p>The road construction is equal to building "life line "in Tanzania. The roads which are constructed in all directions throughout the Lake zone regions (Tabora – Bushishi road, Ziba-Mambali, Mara – Makao road and Simiyu – Kabila-Mahala-Maligisu road) allow its community to be accessible each other's.</p> <p>The rehabilitations allowed people of the regions to transporting people and goods securely and also the lifeline for maintaining our daily livelihood and industry.</p> <p>As a professional of road construction, Junior Construction Company Limited has many performances and experiences for construction and civil engineering for over 10 years now. With this background, Kajima Road has committed to be of service for constructing any roads from expressway to general roads.</p>	
<b>Agencies Involved:</b>	
Tanzania Roads Agency – Regional Manager TANROADS	

## 6. RELIABLE SERVICES PROVIDER

We operate and service 98% of our fleets and equipment from Caterpillar, a company with 90 years' experience. However, ATLAS COPCO is also our reliable service provide when it comes to drilling and blasting equipment. Additionally, FAW, SCANIA, DELTA, SUPERDOLL, MICHELIN, HSE, TOYOTA and many more make our family bigger.

**CATERPILLAR®**

**Atlas Copco**




## 7. CORPORATE SOCIAL RESPONSIBILITIES

A responsible operation is therefore a business imperative and defines the way we operate at Junior Construction Company limited. At Junior Construction Company Limited, we are committed to building, operating, and closing our projects in a safe and responsible manner. To do this, we put a priority on developing long-term and mutually-beneficial relationships with host government and communities while working to minimize and mitigate the social and environmental impacts of our activities.

For the past ten years our contributions have taken many forms such as:

- Assist in repairs and reconstruction of homes of the needy in various parts of Lakezone (Tabora, Shinyanga & Simiyu)
- Schools maintenances
- Community affiliated group's assistance.

## 7. CONTACT

	Physical Address	Postal Address	Contact numbers
 <b>Head Office</b>	Plot No. 41 Kipawa Industrial area, Nyerere Road Opps. TATA Motors, Dar es Salaam.	P.O. Box 80488 DAR ES SALAAM Tanzania, East Africa	Tel: +255 (0) 22 28 62201 Fax: +255 (0) 22 28 62200  Mob: +255 767 444 148 +255 767 444 150 +255 767 444 120
<b>Email</b>	<a href="mailto:info@junior.co.tz">info@junior.co.tz</a> , <a href="mailto:masoudsuleiman22@yahoo.com">masoudsuleiman22@yahoo.com</a>		
<b>Shinyanga Branch</b>	Opp. New Stand Shinyanga-Tanzania	P.O. Box 139 SHINYANGA Tanzania, East Africa	

For more information please visit our website: [www.junior.co.tz](http://www.junior.co.tz)





41, Kipawa Industrial Area  
P.O. Box 80488  
Dar es Salaam, Tanzania  
Tel: +255 767444148  
Email: [info@junior.co.tz](mailto:info@junior.co.tz)  
Website: [www.junior.co.tz](http://www.junior.co.tz)

